

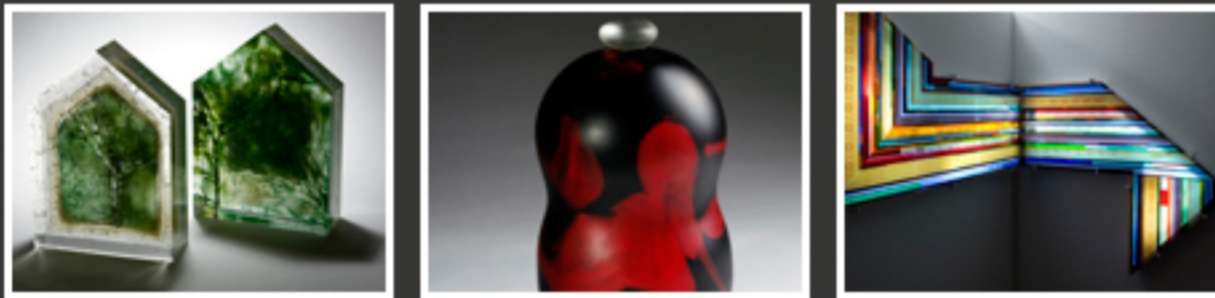


centre of excellence

Each year, the Tasmanian Craft Fair highlights a craft in its feature exhibition, in 2010, we have three feature exhibitions highlighting very different art forms...

This year we have worked hard to bring our visitors a taste (3 Nations, Hoffman Challenge, and Tradition to Modernity) of what is to come on our exhibition front...

+ 3 Nations: Asian Contemporary Glass Art



3 Nations: Asian Contemporary Glass Arts is a comprehensive survey of Asian art glass from China, Japan and Korea, 3 Nations: Asian Contemporary Glass Art, previously exhibited in Hong Kong at the prestigious gallery Koru Contemporary Art and in Korea at Sklo Gallery.

It has been curated by Professor Park Sung-Won, a renowned glass artist in Korea and facilitated by Australian international glass artist Dr Gerry King.

The exhibition provides a critical overview of current trends in Asian glass art and brings together the work of artists who are influencing the glass artists of tomorrow through their teaching at leading tertiary institutions of Asia.

The exhibiting artists include:

- Guan DongHai (China)
- Kazumi Ikemoto (Japan)

The exhibiting artists include:

- Guan DongHai (China)
- Kazumi Ikemoto (Japan)
- Kim June Suk (Korea)
- Kim Ki Ra (Korea)
- Etsuko Nishi (Japan)
- Park Sung Won (Korea)
- Sunny Wang (Taiwan/Hong Kong)

For further details..

- download the [exhibition catalogue](#) (1.9Mb pdf file)
- or visit the [exhibition website](#).

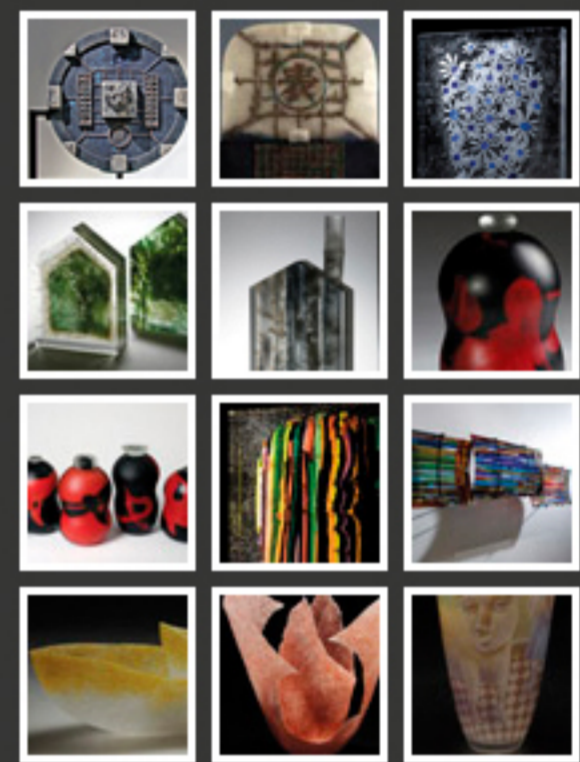
+ Hoffman Challenge

+ Tradition to Modernity

information

- > [sitemap](#)
- > [disclaimer](#)
- > [privacy](#)

3 Nations exhibition



Hoffman Challenge exhibition

